



Yew Tree Avenue, Forest Town, Mansfield, NG19 0JF

 4

 1

 1

 EPC

D

£900 PCM

PINEWOOD





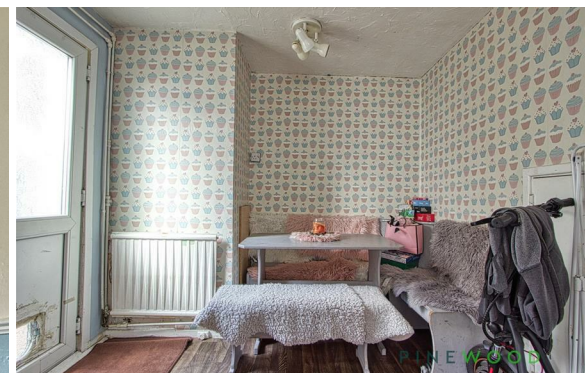
# Yew Tree Avenue Forest Town Mansfield

NG19 0JF

**£900 PCM**

4 bedrooms  
1 bathrooms  
1 receptions

■ FREEHOLD - COUNCIL TAX BAND A



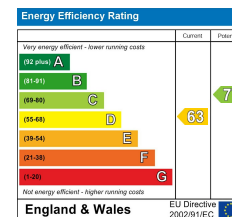
Ideally situated in the popular Forest Town area of Mansfield, this well-proportioned semi-detached home on Yew Tree Avenue offers generous living space and practical features, making it an excellent choice for families or professional tenants.

The property comprises four spacious bedrooms, providing flexibility for growing families, home working, or shared living. A bright and welcoming reception room creates a comfortable space for relaxing or entertaining, while the bathroom is conveniently positioned to serve the household. Additional benefits include off-street parking and a well-laid-out interior designed for everyday living.

For further information or to arrange a viewing, please contact Pinewood.

#### **DISCLAIMER RENTAL**

These particulars do not constitute part or all of a contract. While we endeavour to make our particulars fair, accurate and reliable, they are only a general guide to the property the photos are for reference purpose only, the white goods advertised may not be in situ and and if there are any points which are of particular importance to you or any particular white goods required please check with the office and we will be pleased to check the position on these



Mansfield branch  
24 Albert Street  
Mansfield, NG1  
01623 621001

Clowne branch  
26 Mill Street,  
Clowne, S43 4JN  
01246 810519

Clay Cross branch  
20 Market Street,  
Clay Cross, S45 9JE  
01246 251194

Chesterfield branch  
33 Holywell Street,  
Chesterfield, S41 7SA  
01246 221039

PINEWOOD

